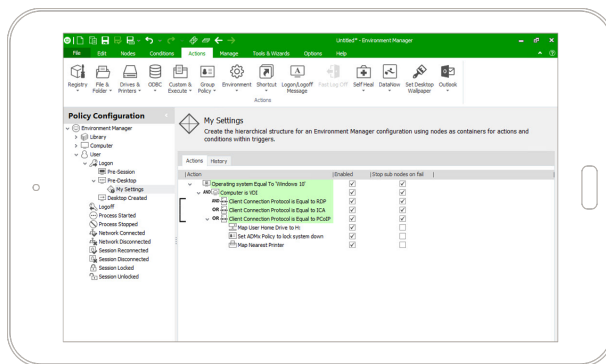


End Group Policy Nightmares

Over time, using Group Policy for contextual and granular control of users' desktops creates an IT maintenance nightmare of epic proportions. Ivanti® Environment Manager Policy replaces hundreds of Group Policies with a single, fast, contextual configuration. Goodbye, GPO maintenance!



Group Policy – The Right Tool for Granular Control?

Using Group Policy to maintain granular control over every user's desktop is akin to providing a plastic surgeon with kitchen knives to perform a procedure. For both scenarios, the result won't be pretty.

When Group Policy is used for contextual and granular control of users' desktops, IT is forced to configure and maintain hundreds or even thousands of Group Policies, which over time becomes a monumental maintenance nightmare. And, because Group Policy is single-threaded, logons slow down as the Group Policy count climbs, forcing users to endure long logon times that sap productivity.

Granular Control and Reduced Maintenance

Environment Manager Policy enables IT to replace hundreds of Group Policies with a single, fast, contextual configuration. Environment Manager Policy eases Group Policy retirement with its ability to import entire Group Policy and templates, directly from Active Director and significantly reduces ongoing maintenance chores with a scalable, click-and-point interface and extensive search and filtering capabilities.

Environment Manager Policy also provides performance analysis to further optimize desktop configurations, and multiple logon triggers to minimize delays, so users can log on faster to a more responsive desktop that is configured to meet their needs while complying with IT policy.

Dynamic Desktop Configuration

As users move through their workday, Environment Manager Policy's dynamic policy management capabilities configure printers, drives, and other desktop sessions dynamically based on their location and context. Its multi-threaded, contextual engine is optimized to apply only those configurations that are relevant to the user context and to get them done quickly, keeping users more productive.

No Additional Infrastructure Required

Environment Manager Policy requires no additional server or database infrastructure to install and run – simply deploy agents to endpoints, install the console, and start applying policy based on user actions and context.

Environment Manager Policy is an excellent addition to Microsoft System Center Configuration Manager (SCCM), enabling SCCM admins to push policy configurations to users from the SCCM console and provide unprecedented control over the user desktop environment. In addition, management packs are available for System Center Operations Manager (SCOM) to alert IT in the event that logon actions are not applied as expected.

Get a Free Trial and Fast Start

Free 30-day trials of Environment Manager Policy are available from your Ivanti sales representative, or request a free trial at www.ivanti.com/EMPO_trial.

About Ivanti

Ivanti makes the Everywhere Workplace possible. In the Everywhere Workplace, employees use myriad devices to access IT networks, applications and data to stay productive as they work from anywhere. The Ivanti automation platform connects the company's industry-leading unified endpoint management, zero trust security and enterprise service management solutions, providing a single pane of glass for enterprises to self-heal and self-secure devices, and self-service end users. More than 40,000 customers, including 78 of the Fortune 100, have chosen Ivanti to discover, manage, secure and service their IT assets from cloud to edge, and deliver excellent end user experiences for employees, wherever and however they work. For more information, visit ivanti.com

The Ivanti logo consists of the word "ivanti" in a bold, lowercase, sans-serif font. The letter "i" is red, while the remaining letters "vanti" are black. A small registered trademark symbol (®) is located at the top right of the letter "i".A vertical bar on the right side of the page, transitioning from red at the top to orange at the bottom.

ivanti.com

1 888 253 6201

sales@ivanti.com