

Ivanti Asset Manager

Keeping tabs on hardware is challenging for asset managers: IT assets are assigned, reassigned, and moved from one location to another depending on business dynamics. Of IT hardware fixed assets, 30%¹ are missing and can't be found, and 53%² of all data loss and systems downtime is caused by hardware failure³.

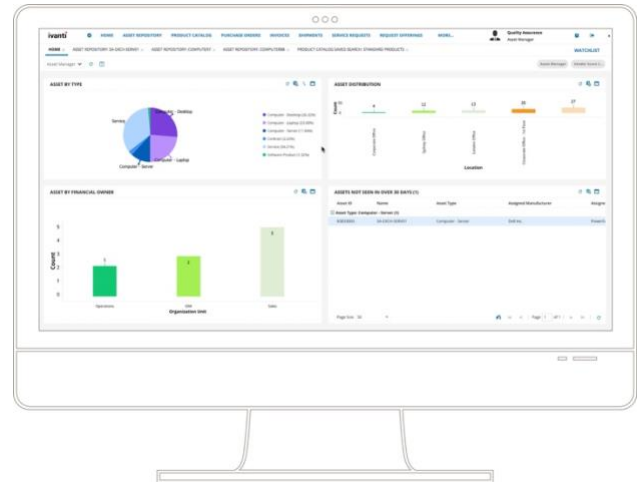
Knowing what assets you have and where they reside, tracking contracts and regulatory compliance, and gaining visibility into cost of ownership are just the tip of your management iceberg.

With Ivanti® Asset Manager, you gain all the management support you need. Get a comprehensive view of your managed assets across your entire environment at any lifecycle status. This enterprise-grade hardware asset management solution keeps tabs on your contracts while tracking lease, warranty, and financial information to ensure your IT assets are optimized and secured.

Manage Your IT Assets from Purchase to Disposal for Complete Asset Optimization

Due to the complexity of discovering, tracking, and managing hardware, many organizations today still aren't tracking their IT assets effectively. In fact, 56% of enterprises verify the location of their fixed assets only once a year, while 10% to 15% haven't verified their assets in more than five years.³ It's crucial that you monitor your hardware assets from procurement to disposal to know where they are and how they're performing so you can make the most of your IT investments.

When you better understand the changes that occur throughout the lifecycle, you can make informed purchasing decisions, replace hardware at the right time, and empower management with accurate, thorough information about total cost of ownership. Ivanti Asset Manager monitors and reports what hardware needs to be purchased, updated, and maintained so that IT management can plan ahead, avoid



hasty purchasing decisions, and optimize asset use operationally and fiscally.

Track Asset Availability and Performance

Manhours spent grappling with multiple systems and inaccurate spreadsheet data to search for and track assets—or produce a single report—is time you can't afford. Asset Manager simplifies the process with an Asset Repository.

This enables consistent management—from procurement to purchase order, receipt, deployment, and disposal. It allows the assignment of asset information, including identifying data, lifecycle status, stock, location, and warranty information.

While it's easy to assign data, the task of tracking assets and their performance becomes difficult as the organization evolves, or users change jobs. To maintain repository accuracy, Asset Manager includes powerful data-importing capabilities that allow imported data from several discovery sources, including Ivanti Endpoint Manager, Ivanti Data Center Discovery, and barcode scans. Compare actual against discovered data and report on exceptions. With these insights you can validate assumptions about assignments and

update the asset information so that your data is always accurate and relevant.

Retrieve Data with Barcode Scanning

Speed up data retrieval with Ivanti's barcode scanning capability. Download the app onto your Android scanning device. Scan assets to look up or modify information or scan multiple assets to update information in Asset Manager as part of your asset-tracking discipline.

Gain Cost and Contract Visibility

Providing accurate, timely financial and contractual information helps you optimize your asset purchases in the way the business needs. With Ivanti, it's simple to store and view procurement data. Open and maintain purchase orders easily and access individual transactions associated with each asset. Roll up to the total cost of ownership to better manage budgets and forecast needs. Now you can assign financial ownership to report on IT spend by department to defend budget spend and achieve accountability.

Take the guesswork out of asset refresh requirements by calculating and tracking asset age and value. View and manage the complete list of contracts in your environment tied to individual assets. Ensure you're in contract compliance.

Anticipate contract-renewal dates with configurable notification time periods; be ready to negotiate new contracts on your terms.

Deliver Enhanced User Experiences with a Product Catalog

Maintain a product catalog of authorized items. See assets purchased or assigned, current stock levels, or active orders. Use the catalog to increase speed to provision while reducing service desk calls. Eliminate frustrations that lead to shadow IT and subsequent asset management complexity. This at-a-glance information ensures you can organize asset availability proactively to meet business and user requests.

Drive Vendor Management

Managing the vendors that provide your assets is an ongoing process that should include performance monitoring and feedback. Asset Manager stores vendor information to ensure you are managing strategic vendors effectively.

You can also keep tabs on vendor interactions by logging comments about their service and the assets they provide. View these comments in aggregated Vendor Scorecards on your dashboards. Determine whether you're getting the most out of your investments or if it's time to terminate relationships.

Highly Configurable to Meet Your Needs

Ivanti Asset Manager provides you out-of-the-box reports and dashboards configured to meet the specific needs of your asset management team roles. Rest assured that many years of Ivanti asset management experience and the best practices of industry organizations such as IAITAM are at the heart of the Asset Manager solution. It also features full custom-design options, including full Development, Test, and Live instance configuration. Asset Manager is available in a turnkey Essentials version, prebuilt for fast time to value, or as an Enterprise-grade fully configurable solution both in the cloud and on-premises.

Integrate with Service Management for improved Service Delivery

Ivanti Asset Manager is built on the proven Ivanti Service Manager platform, leveraging a mature user interface and offering a strong foundation for growth. Asset Manager integrates with Ivanti Service Manager for easy request management. Users benefit from a rich self-service experience as they navigate easily through an approved service catalog, alleviating pressure on IT staff. In addition, Asset Manager enhances change management processes and policies by providing status updates to IT assets to help maximize productivity. The solution delivers a single asset repository that integrates with your service management CMDB, ensuring accurate, up-to-date information.

1. IVI-2232 Ivanti Hardware Asset Management infographic
2. http://www.infostor.com/backup-and_recovery/disaster-recovery/data-loss-and-downtime-costing-enterprises-1.7-trillion-a-year-survey.html
3. EY Biennial Online Survey; "Navigating through the complexities of the fixed asset management function"; 2013; [http://www.ey.com/Publication/vwLUAssets/EY_-_Navigating_through_the_complexities_of_the_fixed_asset_management_function/\\$FILE/EY-navigating-through-the-complexities-of-the-fixed-asset-management-function.pdf](http://www.ey.com/Publication/vwLUAssets/EY_-_Navigating_through_the_complexities_of_the_fixed_asset_management_function/$FILE/EY-navigating-through-the-complexities-of-the-fixed-asset-management-function.pdf)

Copyright © 2018, Ivanti. All rights reserved. IVI-2270 02/19 MF/BB/DL

Learn More



ivanti.com



1 800 982 2130



sales@ivanti.com