

# Ivanti Unified Endpoint Manager

**Ivanti® Unified Endpoint Manager—or Ivanti UEM—increases user and IT productivity by helping IT administrators gather detailed device data, automate software and OS deployments, personalize workspace environments, and fix user issues quickly. Ivanti UEM is the only solution that personalizes the user workspace, while letting IT Analysts and Admins do their magic for all devices from one management experience—not through two, three, four or more consoles.**

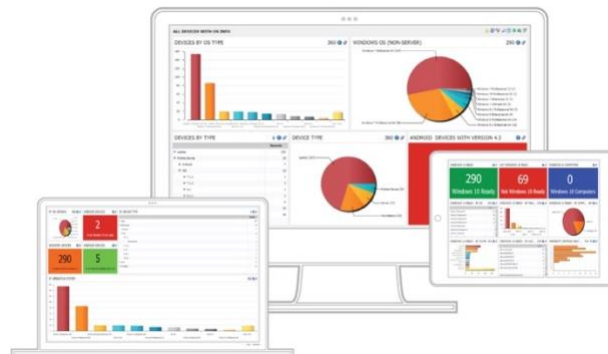
## Act Faster with Greater Visibility

The discovery and inventory of all endpoints is key to unifying IT. When you add the right data integrated into a business-value dashboard, life in IT becomes clearer and actions happen faster. Ivanti® Xtraction helps you create business-value dashboards easily—without data scientists or gurus—and ties together all your information into data visualizations that make sense and promote quick action from your teams.

## Unified Management Across More Devices

Organizations must address how to manage and enable the operating systems, applications, and profiles in corporate environments. It's time to end the complexities of separate solutions for Enterprise Mobility Management (EMM), client management, and user experience management. When you deploy the right Unified Endpoint Management (UEM) solution, expect it to do the following:

- Simplify and secure enterprise mobility alongside your users' laptops and desktops
- Apply policies, personalization, and actions quickly across all devices
- Provide assets or services to users via self-service or a targeted distribution



- Leverage the intelligence of the system to determine which users and devices get what

No one else can do this like Ivanti because others don't unify the management of all systems users leverage—Windows (physical and virtual), macOS, Linux, Unix, iOS, and Android. We even help you manage IoT devices like Apple TV and Raspberry Pi.

## Modern Management for Windows 10

Ivanti Unified Endpoint Management allows you to migrate users' personal settings and files easily to Windows 10. However, migration is only the start of the Windows 10 journey, automates the large, frequent Windows-as-a-Service updates with minimized network overhead. The solution will also help you onboard new Windows devices quickly by leveraging Windows Autopilot, without requiring Microsoft Intune®, giving you a way to provision users' devices with "zero-touch" from IT. The user receives their new Windows 10 device ready to go from the first time they power on their device.

## Experiences that Deliver User Productivity

Your users want more than content; they long for a better user experience—achieved through a user workspace that's personalized. A personalized workspace also

delivers higher productivity when logon times are reduced and desktop responsiveness is improved. Witness the number of support calls drop as you increase user satisfaction. Plus, help your new employees start out right by ensuring all their devices are configured consistently, ready to help them excel at their jobs.

### Integration that Unifies IT

It's the ultimate in UEM because it includes the user experience. It also integrates seamlessly with endpoint security and patching that is managed from the same management console. With other vendors there is swivel chair management to accomplish anything and finger pointing when something goes wrong. The Ivanti solution also integrates across IT disciplines to create unified solutions focused on asset tracking and license compliance, service management, and automation for digital transformation.

**Gain visibility and manage the devices your people employ—all within a unified, simplified experience.**

Platforms		Policy and Personalization		Add-Ons and Unified IT Solutions	
What's Included	Capabilities	What's Included	Capabilities	Top Add-Ons	Capabilities
<b>Client Management</b>	Active, passive, and agentless discovery and inventory	<b>Reduce complexity</b>	Replace Group Policy—applies ADM/ADMX settings faster and with more context	<b>Cloud Services Appliance</b>	Manage remote offices/users through Internet connection without needing a VPN
	Windows macOS Linux UNIX		Eliminate login scripts—faster logons, graphical console, multi-threaded engine	<b>Endpoint Security for Endpoint Manager</b>	Detect and prevent threats and respond swiftly to infections—automatically isolate and remediate ransomware and malware threats
	Software Distribution, Remote Control, OS Provisioning, and Power or Energy Management	<b>Personalize Windows devices</b>	Apply contextual policy settings and user personalization	<b>Patch for Endpoint Manager</b>	Automate patch processes and rollouts for OS and third-party application patching
<b>MDM Management</b>	iOS Android Windows macOS Chromebook		Improve Office 365—cached roaming to ensure the success of Exchange and OneDrive in non-persistent environments	<b>File Director</b>	Sync users' desktop files to on-premises or Office 365 storage with total IT control, audit, and security
<b>Modern &amp; Co-Management</b>	Co-manage CMT & MDM. Windows 10 AutoPilot support for zero-touch device provisioning			<b>Additional Xtraction Connectors</b>	Access data from multiple business and IT sources to create business-value dashboards
<b>IoT Management</b>	Apple TV Raspberry Pi (Raspbian)	<b>Deliver a more efficient user experience</b>	Faster login times—move unnecessary actions out of the logon process and apply policy actions and personalization on-demand only when needed	<b>Top Unified IT Solutions</b>	<b>Capabilities</b>
<b>Dashboards, Custom Reporting, and Alerts</b>	Ivanti Xtraction business-value dashboards—powerful insight without a spreadsheet expert Custom reports and queries System alerts to provide proactive service and support			<b>Windows 10 Migration and Windows as a Service (Updates)</b>	Automate how you deliver Windows 10 machines that are personalized and ready for users—then maintain all the updates Microsoft throws at you
<b>Self-Service Portal</b>	Self-service workspace for the end user—apps, docs, and links			<b>Isolate and Remediate</b>	Stop malware in its tracks— isolate an infected machine, remotely control it, remediate or reimage it, and put it back on the network
<b>Role-based Management</b>	Manage PC, mobile, and IoT devices through a single Admin console—with management rights that can be assigned based on role and context			<b>Self-service IT</b>	Create a service catalog that ties everything together in the background—services, deployment, asset management—while the user just pushes a button

[Learn More](#)
[ivanti.com](http://ivanti.com)
[1 800 982 2130](tel:18009822130)
[sales@ivanti.com](mailto:sales@ivanti.com)