

Ivanti Endpoint Manager

Ivanti is a recognized leader in unified endpoint management. Ivanti® Endpoint Manager, powered by Landesk, increases user and IT productivity by helping IT administrators gather detailed device data, automate software and OS deployments, and quickly fix user issues. It integrates and unifies the management of all end-user devices and provides core data and services leveraged by other Ivanti solutions and Ivanti partners.

Discover the Data that Helps IT Control Assets, Compliance, Costs, and Security

Know what's there before anyone else does. Ivanti Endpoint Manager provides extensive data about managed and unmanaged devices through industry-leading discovery and inventory technology. This information is key for boosting your level of insight into—and control over—business risks and costs due to:

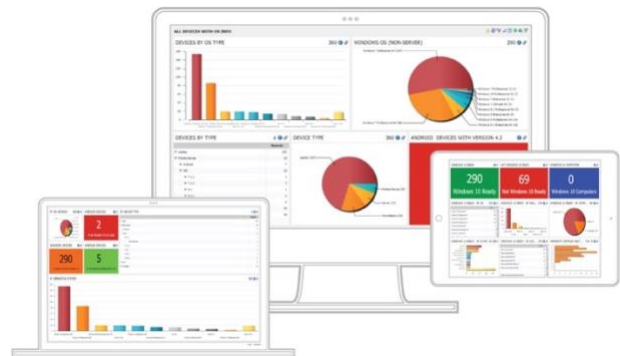
- Software compliance fines and over-purchasing licenses
- Failing to meet corporate service level agreements
- Security vulnerabilities on end-user devices
- Excessive energy bills

Unify Endpoint Management

Don't get overwhelmed by all your endpoints. No matter what leading device or OS your users have in their hands, you can manage various endpoints and operating systems with Ivanti Endpoint Manager, including:

- PCs/Servers: Windows, macOS, Linux, Unix, and Chromebooks
- Mobile devices: iOS and Android
- IoT: tvOS and Raspbian

Gain one-click access to see, configure, and manage the IT policies and processes related to your users and groups and



all their associated devices. Intelligent actions such as setting policies or distributing software take effect only on the user devices where it makes sense.

Provide Insight and Take Immediate Action

IT needs the right information at the right time and in the right place to take decisive action. A companion solution, Ivanti® Xtraction, enables you to customize dashboards and reports so you have the needed visibility to demonstrate how effective your IT initiatives are. Insightful Xtraction dashboards, real-time console dashboards, customizable reporting, and alerting tools include:

- Information and visual content about each user and all their devices
- Business value dashboards that can link to multiple IT and business data sources
- Role-based console with integrated dashboards and actions
- Gantt charts and status for automated software rollout projects
- Proactive monitoring alerts to identify potential issues for systems and users

Improve Productivity and Modernize IT

Ivanti Endpoint Manager is core to enabling unified IT. Automate IT tasks and modernize the experience to improve productivity for both IT staff and end users. Minimize issues that threaten user productivity caused by system outages, device downtime, and change and configuration activities. Keep pace with the insane cadence of OS migrations and updates from Windows 10 and macOS. Save IT administrators from jumping between multiple consoles and free up time for more business-related initiatives.

On-Premises, In the Cloud, or as a Managed Service

Gain the flexibility around how you deliver IT and how you expense your IT. Where some vendors provide only one delivery model, Ivanti delivers the same endpoint management functionality and benefits either on-premises or in the cloud. When in the cloud, choose to use your own administrative resources or leverage Ivanti’s expertise to handle your core management as a managed service.

Unified Endpoint Management for All Your Devices

Ivanti Endpoint Manager enables you to manage every user and any number of devices they employ. The following table provides a quick overview of the leading management capabilities available for each end-user device:

Windows and MacOS		Mobile Device Management		Other Platforms and Add-Ons	
What's Included	Capabilities	What's Included	Capabilities	Other Platforms	Capabilities
Core Management	Active, passive, and agentless discovery and inventory.	Core MDM	Active, passive, and agentless discovery and inventory.	Linux	Active and passive discovery and inventory.
	Configuration and policy management.		Enrollment and device restrictions.		Software distribution.
	Co-manage with both CMT and MDM on same device.		Device lock and selective wipe.	Chromebook	Active and passive discovery and inventory.
Remote Assistance	Secure remote control—from any HTML5 browser.			Unix	Active and passive discovery and inventory.
				Top Add-Ons	Capabilities
OS and Software Management	OS provisioning and migration, Windows 10 Autopilot support for zero-touch provisioning.	Mobile Application Management	Self-service workspace for end users to access apps, docs, and links.	Cloud Services Appliance	Manage remote offices/users through Internet connection without needing a VPN.
	Software packaging, distribution, and automated rollout projects.		User-targeted application distributions.	Patch for Endpoint Manager	Automate vulnerability assessment and patch management for the most at-risk software.
Role-based Management Experience	Manage all users and platforms through single admin console.	Role-based Management Experience	Manage user and mobile device needs through single admin console.	Endpoint Security for Endpoint Manager	Detect and prevent threats before they impact the business and respond swiftly to infections.
Dashboards, Custom Reporting, and Alerts	Ivanti Xtraction business-value dashboards—powerful insight without a spreadsheet expert. Custom reports and queries.	MDM Managed Platforms	iOS Android Windows macOS Chromebook	Asset Optimizer	Eliminate unused software licenses, drive immediate license savings, and ensure audit preparedness.
	System alerts to provide proactive service and support.			Package Studio	Provides a 'Setup Store' for most typical Windows applications—easily customize setups and packages.
Self Service	Portal Manager provides an app-store experience for all the apps you want to provide your users.				Additional Connectors
Power Management	Configure and leverage latest OS features—model your energy savings.				

Learn More

 [ivanti.com](https://www.ivanti.com)
 1 800 982 2130
 sales@ivanti.com